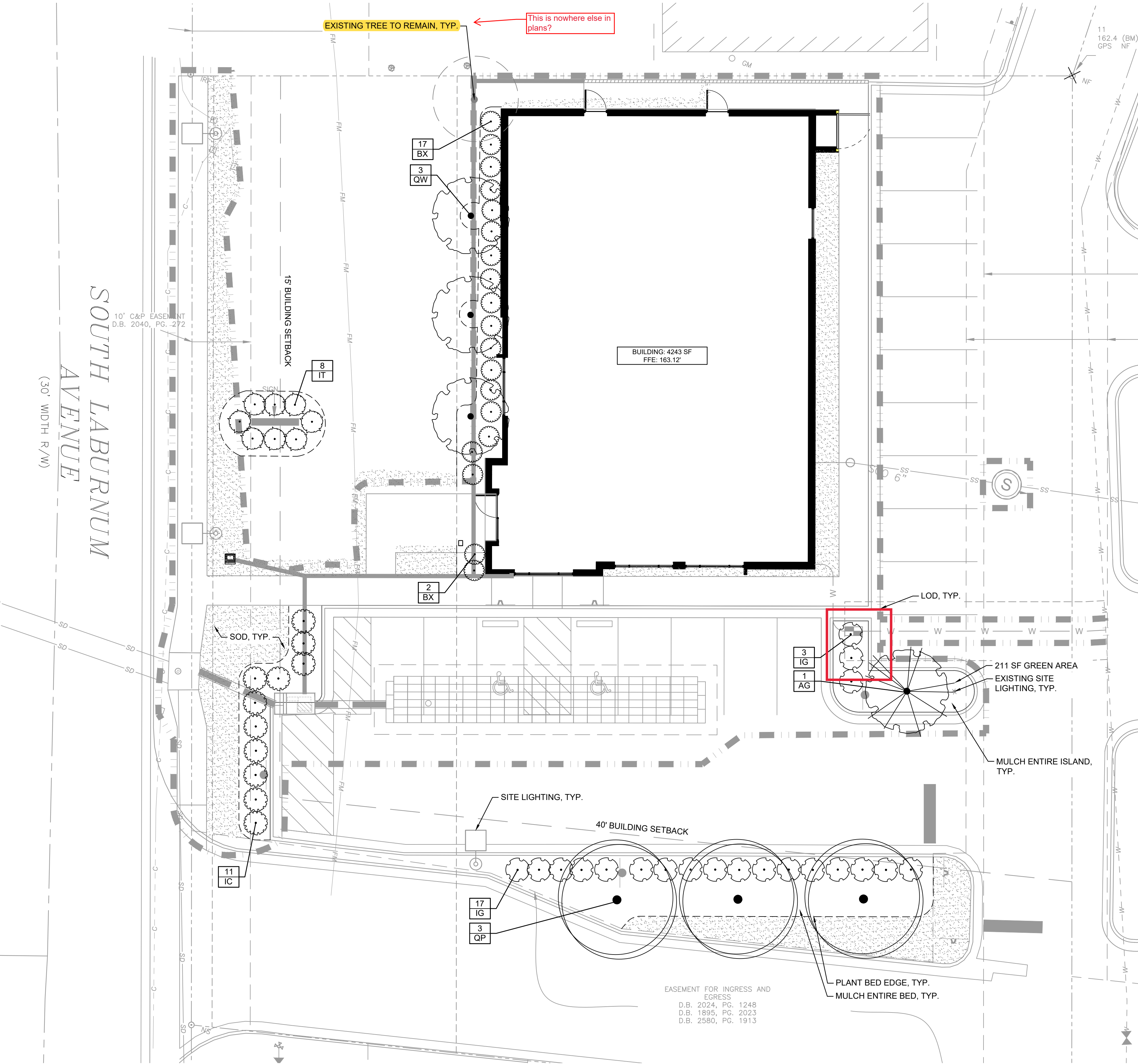


Plotted By: Bldg. Mgr. Sheet Set: KHA - Layout: LP-101 LANDSCAPE PLAN - February 01, 2024 08:15:53am. K:\VIC-DVA\113169007 - Mercy Richmond Laburnum\CAD\PlanSheets\LP-101 LANDSCAPE PLAN.dwg
This document, together with the concepts and designs presented herein, is intended only for the specific purpose and client for which it was prepared. Reuse of and improper reliance on this document without written authorization and adaptation by Kimley-Horn and Associates, Inc. shall be without liability to Kimley-Horn and Associates, Inc.

PLANT SCHEDULE							
TREES	QTY	BOTANICAL NAME	COMMON NAME	CONT	CAL / HT	NATIVE (Y/N)	REMARKS
QP	3	Quercus phellos 'Hightower'	Willow Oak	B & B	3" Cal	Yes	Strong Central Leader, Matched.
QW	3	Quercus x warei 'Long'	Regal Prince® Oak	B & B	2.5" Cal	No	Strong Central Leader, Matched.
ORNAMENTAL TREES	QTY	BOTANICAL NAME	COMMON NAME	CONT	CAL / HT	NATIVE (Y/N)	REMARKS
AG	1	Amelanchier x grandiflora 'Autumn Brilliance'	Autumn Brilliance Apple Serviceberry	B & B	8' HT. MIN	Yes	Single Stem; Strong Central Leader, Matched.
SHRUBS	QTY	BOTANICAL NAME	COMMON NAME	CONT	HEIGHT	NATIVE (Y/N)	REMARKS
BX	19	Buxus x 'SB108'	NewGen Independence® Boxwood	Cont.	24" HT MIN.	No	Full To Ground, Dense.
IC	11	Ilex cornuta 'Burfordii Nana'	Dwarf Burford Holly	Cont.	24" HT MIN.	No	Full To Ground, Dense.
IG	20	Ilex glabra 'Shamrock'	Shamrock Inkberry Holly	Cont.	24" HT MIN.	Yes	Full To Ground, Dense.
IT	8	Itea virginica 'Sprich'	Little Henry® Sweetspire	Cont.	24" HT MIN.	Yes	Full To Ground, Dense.



GENERAL HENRICO COUNTY ZONING CODE DIVISION 3. LANDSCAPE AND TREE PROTECTION

- ALL PARKING LOTS OF SIX OR MORE SPACES SHALL BE PROVIDED WITH INTERIOR LANDSCAPE AREAS CONTAINING NOT LESS THAN FIVE PERCENT OF THE TOTAL AREA OF THE PARKING SPACES. SUCH LANDSCAPING SHALL BE IN ADDITION TO ANY PLANTING OR LANDSCAPING WITHIN SIX FEET OF A BUILDING, PARKING LOT PERIPHERAL LANDSCAPING AND TRANSITIONAL BUFFERING REQUIRED BY THIS SECTION.
- TO MINIMIZE THE SPREAD OF DISEASE AND INSECT INFESTATION IN A PLANT SPECIES, NO MORE THAN SEVENTY PERCENT (70%) OF THE TREES REQUIRED TO BE PLANTED ON A SITE SHALL BE OF ONE GENUS. IN ADDITION, WHEN MORE THAN TWENTY (20) TREES ARE REQUIRED ON A SITE, NO MORE THAN THIRTY-FIVE PERCENT (35%) OF THE REQUIRED TREES SHALL BE OF A SINGLE SPECIES. EXCEPTION CAN BE MADE IF THE DESIGN CONCEPT DICTATES OTHERWISE AND IS APPROVED BY THE DIRECTOR.
- ALL DEVELOPMENTS REQUIRING APPROVAL OF A SITE AND/OR CONSTRUCTION PLAN MUST PROVIDE MINIMUM TREE COVER AT TEN (10) YEARS MATURITY AS SET FORTH IN SECTION 24-5308 (MINIMUM TREE COVER). BECAUSE THE INTENT OF THIS CHAPTER IS TO ENHANCE ENVIRONMENTAL PROTECTION, AESTHETICS AND PROPERTY VALUES OF DEVELOPED LAND, THE APPROVED PLANS SHALL PROVIDE FOR A REASONABLE DISTRIBUTION OF TREES THROUGHOUT THE SITE AND SHALL REFLECT THE TOPOGRAPHY AND CONFIGURATION OF THE SITE AND THE LOCATION OF EXISTING AND/OR PROPOSED IMPROVEMENTS, AND SHALL BE IN CONFORMANCE WITH GOOD HORTICULTURAL PRACTICES.

GENERAL NOTES:

- SOD ALL AREAS WITHIN PROPERTY LIMITS THAT ARE NOT COVERED WITH MULCHED PLANT BEDS, STONE MULCH, BUILDINGS, HARDSCAPE, PAVEMENT, OR OTHERWISE NOTED.
- EXISTING TREES AND SHRUBS INDICATED TO REMAIN SHALL BE PROTECTED FROM CONSTRUCTION ACTIVITIES BY INSTALLING TREE PROTECTIVE FENCING PER THE PROJECT PLANS AND SPECIFICATIONS.
- SEE SHEET LP-501 FOR PLANTING NOTES AND DETAILS.
- THE OWNER IS RESPONSIBLE FOR REPLACEMENT OF ANY PLANTING (I.E. SHRUBS, ETC.) DAMAGED OR REMOVED BY DPU, OR ITS AGENT, AS REQUIRED FOR MAINTENANCE OF COUNTY OWNED WATER AND/OR SEWER FACILITIES.

10-Year Tree Canopy Coverage Requirements (as noted in Sec. 24-5308)			
Gross Site Area	0.572 Acres	24,916 SF	
Deductions			
Building Area		4,243 SF	
Parking Spaces		2,916 SF	
Public Sewer Easement		3,742 SF	
Adjusted Gross Site Area		14,015 SF	
Tree Canopy Required	(10% Required)	1,402 SF	
Tree Canopy Provided (Total)	(Refer to Tree Canopy Breakdown)	1,406 SF	

Tree Canopy Breakdown				
Qty.	Type	Size	10 Yr. Canopy Coverage	
3	Quercus phellos 'Hightower'	3" Cal.	250 SF	750 SF
3	Quercus x warei 'Long'	8' Ht.	100 SF	300 SF
1	Amelanchier x grandiflora 'Autumn Brilliance'	8' Ht.	150 SF	150 SF
Existing Vegetation To Remain		1.25	165 SF	206 SF
Total:			1,406 SF	

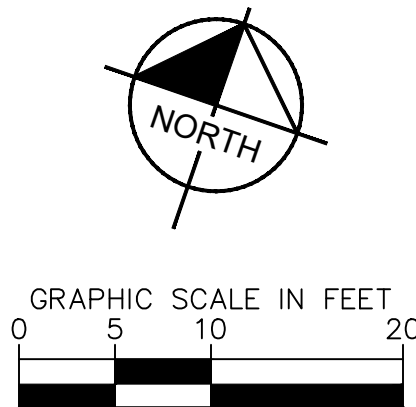
Foundation Planting Requirements (as noted in Sec. 24-5309)				
Zoning Type	Length	Quantity Required	Quantity Provided	
B-2C	80	16 Shrubs	14 Shrubs	
Total		16 SF		

Parking Lot Landscaping (as noted in Sec. 24-5312)				
Location (Abutting Use)	Width	Length	Required Trees	Provided Trees
West - Abutting R.O.W	10 LF	53 LF	3 Trees (3/100 LF)	3 Trees
Notes: 1. Required trees for Laburnum Ave. have been placed along internal drive due to the existing 30' sewer easement.				

Interior Landscaping (as noted in Sec. 24-5312.D)		
Total Parking Spaces	18	
Total Vehicle Area	2,916 SF	
Subtotal		
Total Green Area Required (5%)	146 SF	
Total Green Area Provided:	211 SF	

Open Space Requirements (as noted in Sec. 24-5203)		
Gross Site Area	0.572 Acres	24,916 SF
Total Open Space Required:	(15% Required)	3,737 SF
Total Open Space Provided:		6,299 SF

NATIVE PLANT TABULATIONS (as noted in ZO Sec. 24-5304)				
PLANT TYPE	QUANTITY	REQUIRED	PROVIDED	
			QTY.	%
			4	67%
			28	48%
Groundcover	0		0	0%
TOTALS				
TOTAL PLANTS SPECIFIED		TOTAL SUM OF NATIVE PLANTS	TOTAL NATIVE PERCENT	
64		32	50%	
NOTES: 1) Percentages apply to the total quantity of each plant type specified in the landscape 2) Non-native vegetation for the purposes of providing edible fruits, seeds, or nuts may be planted and shall not be calculated in the above-stated requirements for native species				



REVISIONS

No.

DATE

BY

POD-2023-00293

Kimley»Horn

© 2023 KIMLEY-HORN AND ASSOCIATES, INC.
2035 MAYWELL STREET, SUITE 200, RICHMOND, VA 23230
PHONE: 804-673-3882
WWW.KIMLEY-HORN.COM

COMMONWEALTH OF VIRGINIA

ROBBIE D. ROACH
Lic. No. 1870
01/16/2014

LANDSCAPE ARCHITECT

KHA PROJECT
113169007

DATE
01/26/24

SCALE AS SHOWN

DESIGNED BY JTS

DRAWN BY JTS

CHECKED BY RDR

LANDSCAPE PLAN

MERCY HEALTH URGENT CARE
AT LABURNUM CENTER
PREPARED FOR
BON SECOURS

HENRICO COUNTY

VA

SHEET NUMBER
LP-101